

GLLUSA

75 Marine Street, Farmingdale, NY 11735
 516-280-2854 / Service@GLLUSA.com
 www.GLLUSA.com

Project:	
Date:	
Note:	

SIMPLY RELIABLE

LED FLAT PANEL (PREMIUM) 2'x4' C11 SERIES



FEATURES

Designed for drop in ceilings and places with limited installation depths, GLL flat panels are the best replacement for fluorescent fixtures. With a better light distribution, panels produce an even light that's more comfortable on the eyes. Emergency backup, surface mount kits and more accessories available.

APPLICATIONS

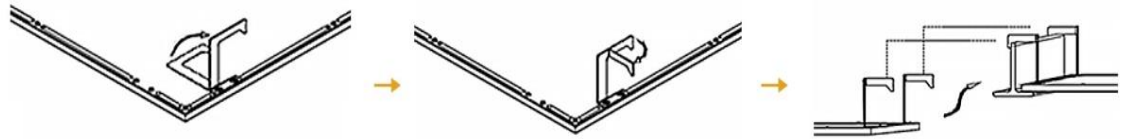
- Offices
- Schools
- Hospitality
- Healthcare and Other Commercial
- Industrial Applications

SPECIFICATIONS		68-PL-612-40W-30K-D-P	68-PL-612-40W-40K-D-P	68-PL-612-40W-50K-D-P
ORDERING	Brand	Builders Pack	Builders Pack	Builders Pack
	SKU	ES19274-1	ES19274-2	ES19274-3
GENERAL PERFORMANCE	Power Consumption	40W	40W	40W
	Color Temp. (CCT)	3000K	4000K	5000K
	Lumens Delivered (lm)	5004.93 lm	5004.93 lm	5115.75 lm
	Efficacy (lm/w)	131.12 lm/w	131.12 lm/w	133.82 lm/w
	LGP		PS	
	CRI		>80	
	L70 Lifetime (Hours)		50,000 Hours	
ELECTRICAL	Equivalency		4 x 32W T8	
	Power Factor		>0.9	
	Input Voltage		AC 100-277V	
PHYSICAL	Dimming		0-10V	
	Mounting	Drop Mount / Pendant Mount / Surface Mount with Kits		
	Operating Temp.	-4°F ~+ 104°F		
	Storage Temp.	-22°F ~+ 140°F		
QUALIFICATION	Ingress Protection (IP)	IP20		
	Certifications	UL: E491814 cUL DLC RoHs FCC Ce		
	Material Usage	PMMA Diffuser & Aluminum Frame		
	Environment	Interior		
DIMENSIONS (Package Subjecting to Change)	Warranty	5 years		
	Product Size	23.74" x 47.76"		
	Gross Weight	13.2 lbs		

Project:	
Date:	
Note:	

INSTALLATION DIAGRAM

HANGHOOK INSTALLATION

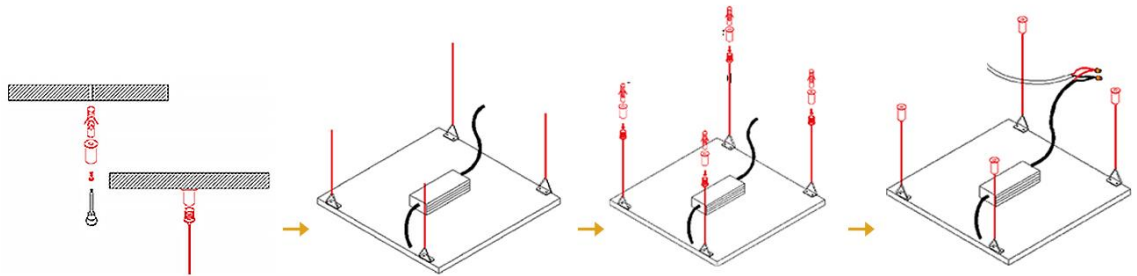


1. Pull earthquake clip away from panel until facing perpendicular to the panel surface.

2. Bend earthquake clip 90°.

3. Install panel light on grid supports.

CHAIN HANG INSTALLATION



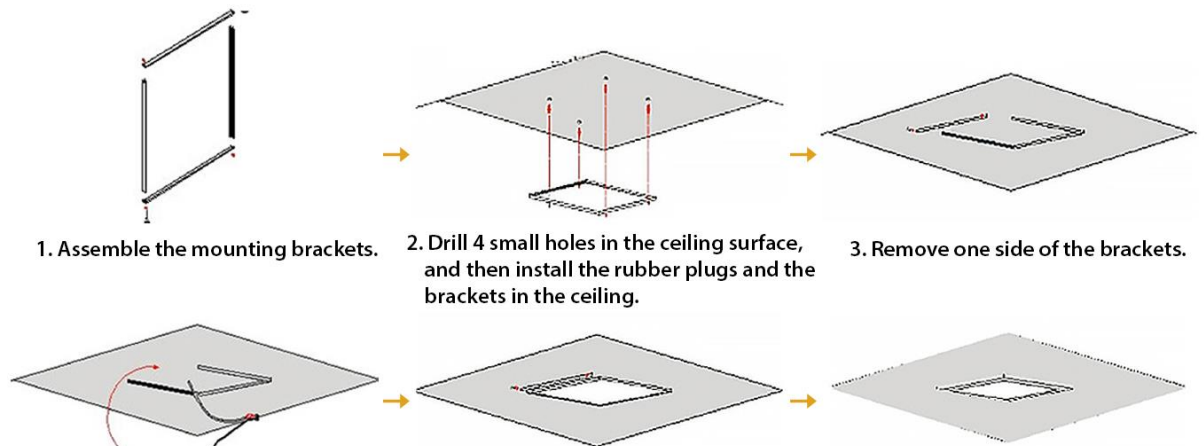
1. Dig 4 small holes, install the rubber plugs and fix the connectors.

2. Connect the rope to the panel light.

3. Connect the other side of the rope to the connectors.

4. Connect the panel light with the power.

SURFACE MOUNT INSTALLATION



1. Assemble the mounting brackets.

2. Drill 4 small holes in the ceiling surface, and then install the rubber plugs and the brackets in the ceiling.

3. Remove one side of the brackets.

4. Connect the panel light to an incoming power line.

5. Install the panel light into the brackets.

6. Install the remaining side of the bracket.

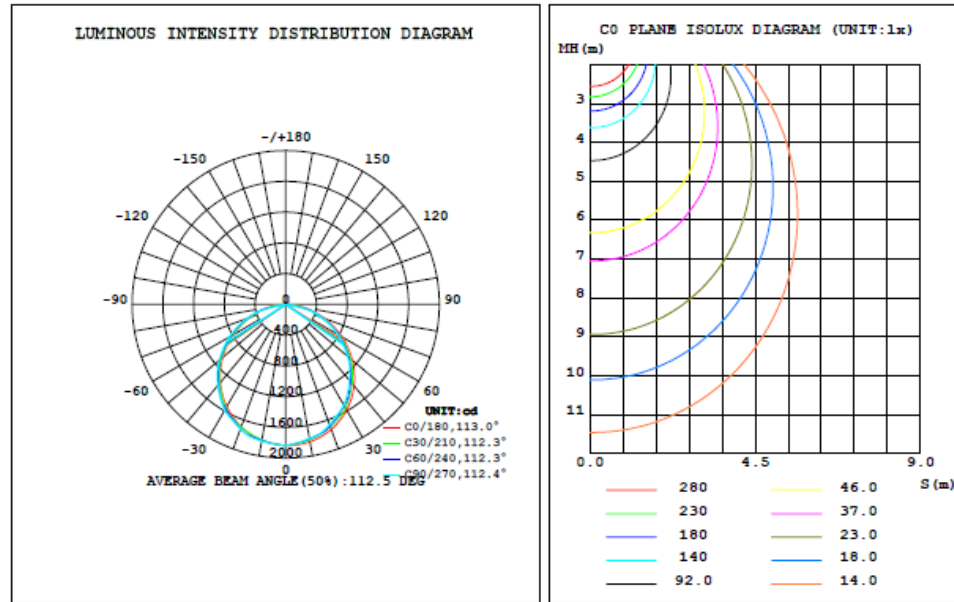
GLLUSA

75 Marine Street, Farmingdale, NY 11735
 516-280-2854 / Service@GLLUSA.com
 www.GLLUSA.com

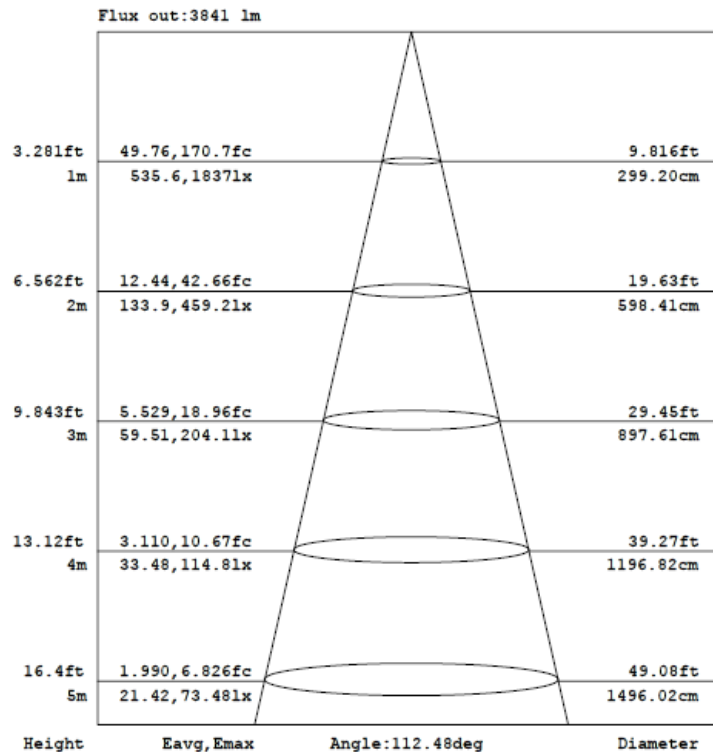
Project:	
Date:	
Note:	

SIMPLY RELIABLE

DISTRIBUTION CURVE



DISTANCE CURVE



SHIPPING (Package Subjecting to Change)

Pcs / Carton	4pcs
Master Carton Size	49.41" x 25.59" x 7.48"
Pcs / Pallet	64pcs
Pcs / 20' GP	680pcs (No Pallet) 480pcs (Palletized)
Pcs / 40' GP	1350pcs (No Pallet) 960pcs (Palletized)
Pcs / 40' HQ	1728pcs (No Pallet) 1152pcs (Palletized)
Pcs / 45' HQ	1804pcs (No Pallet) 1280pcs (Palletized)

GLLUSA

75 Marine Street, Farmingdale, NY 11735
516-280-2854 / Service@GLLUSA.com
www.GLLUSA.com



Project:	
Date:	
Note:	

SIMPLY RELIABLE

LAMP CODE DEFINITIONS

Internal Use	Category	Size	Wattage	CCT	Dimming	Listing
64	PL = Panel	612 = 2'x4'	40w	30k = 3000k 40k = 4000k 50k = 5000k	D = 0-10v	P = Premium

ACCESSORIES

SKU	Description	Image
GL81001	LED Emergency Power Supply-12W	
GL08045-3	Cable Kit for Flat Panel 2'x4'	
GL08903	Surface Mount Kit for Flat Panel 2'x4'	